

Instructions

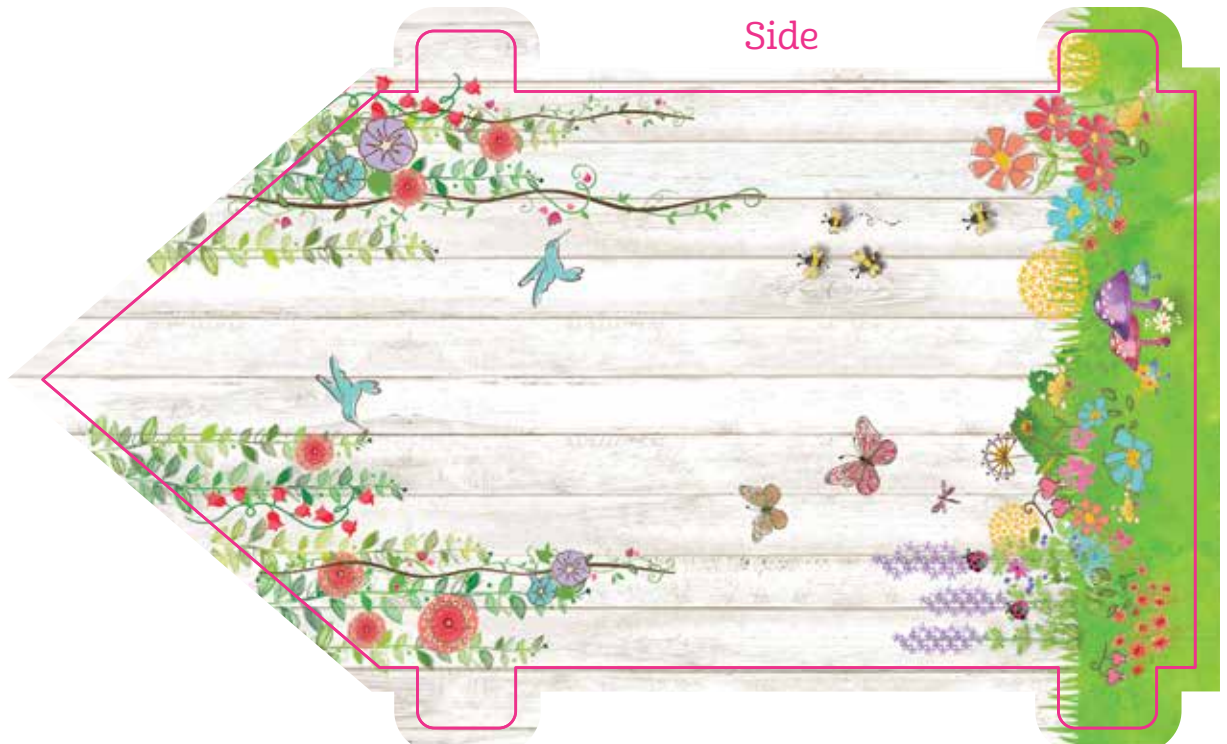
Have an adult help you cut out the four walls and the roof of the playhouse along the pink lines. On the front and back walls, have an adult also cut a slit where marked. Also have an adult help you cut out the WellieWishers paper dolls. Once the dolls are cut out, fold along the dotted line near each doll's feet to create a base to help her stand up.

To construct the house, first take one of the pointed walls. Slide two of its tabs into the slits on the front wall (the one with the door and windows), and slide two of its tabs into the slits on the back wall (the one with the signpost). Do the same with the other pointed wall. Then fold the roof along the two dotted lines. Tape the roof's tab to the inside of the back wall. Slide the tabs from the top of the front wall into the slits on the roof.

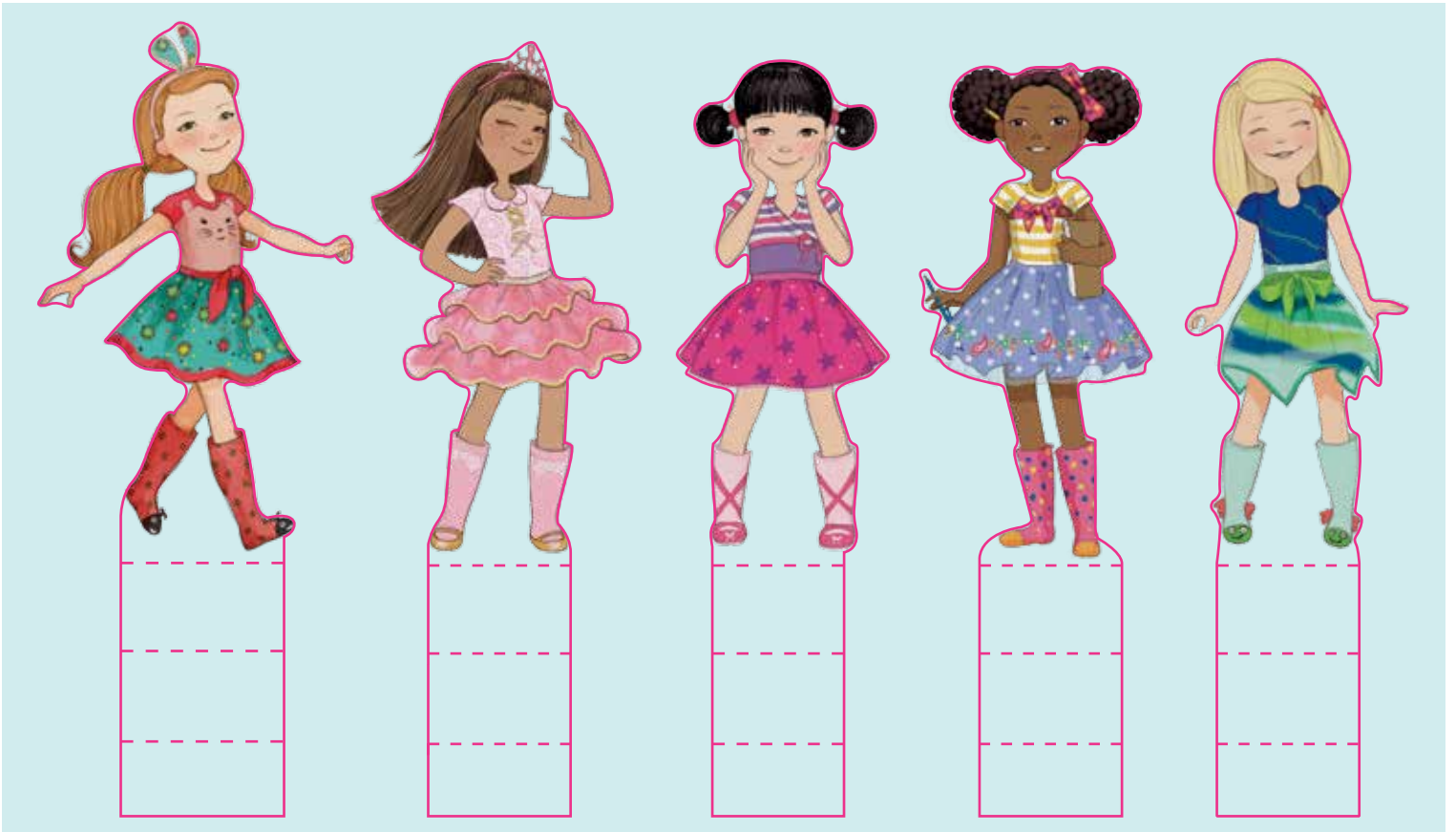
Front



Side



Paper Dolls



Back



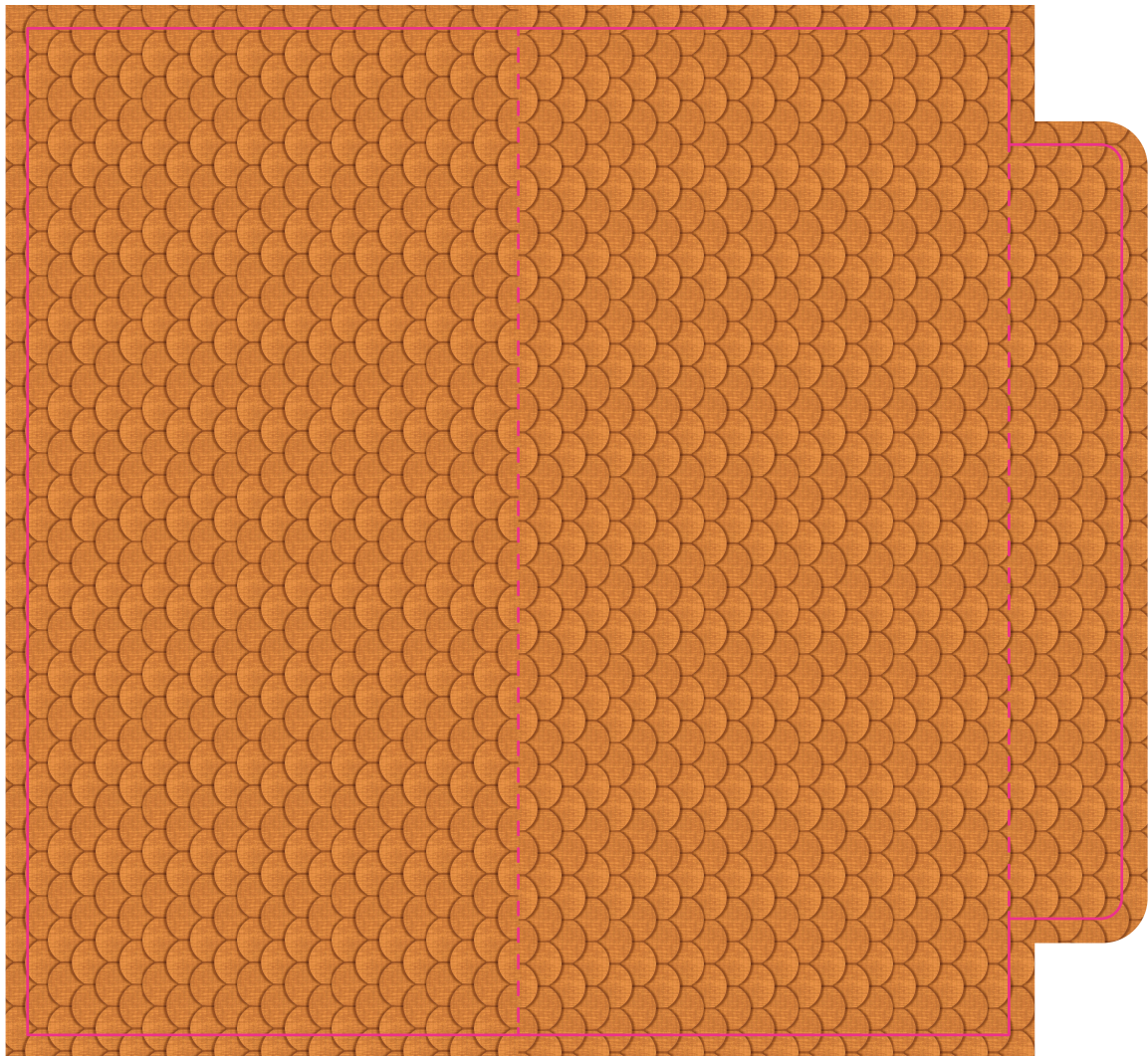
 American Girl®

Copyright © 2016 American Girl. All rights reserved. All American Girl marks are trademarks of American Girl.



Side

Roof



 American Girl®

Copyright © 2016 American Girl. All rights reserved. All American Girl marks are trademarks of American Girl.